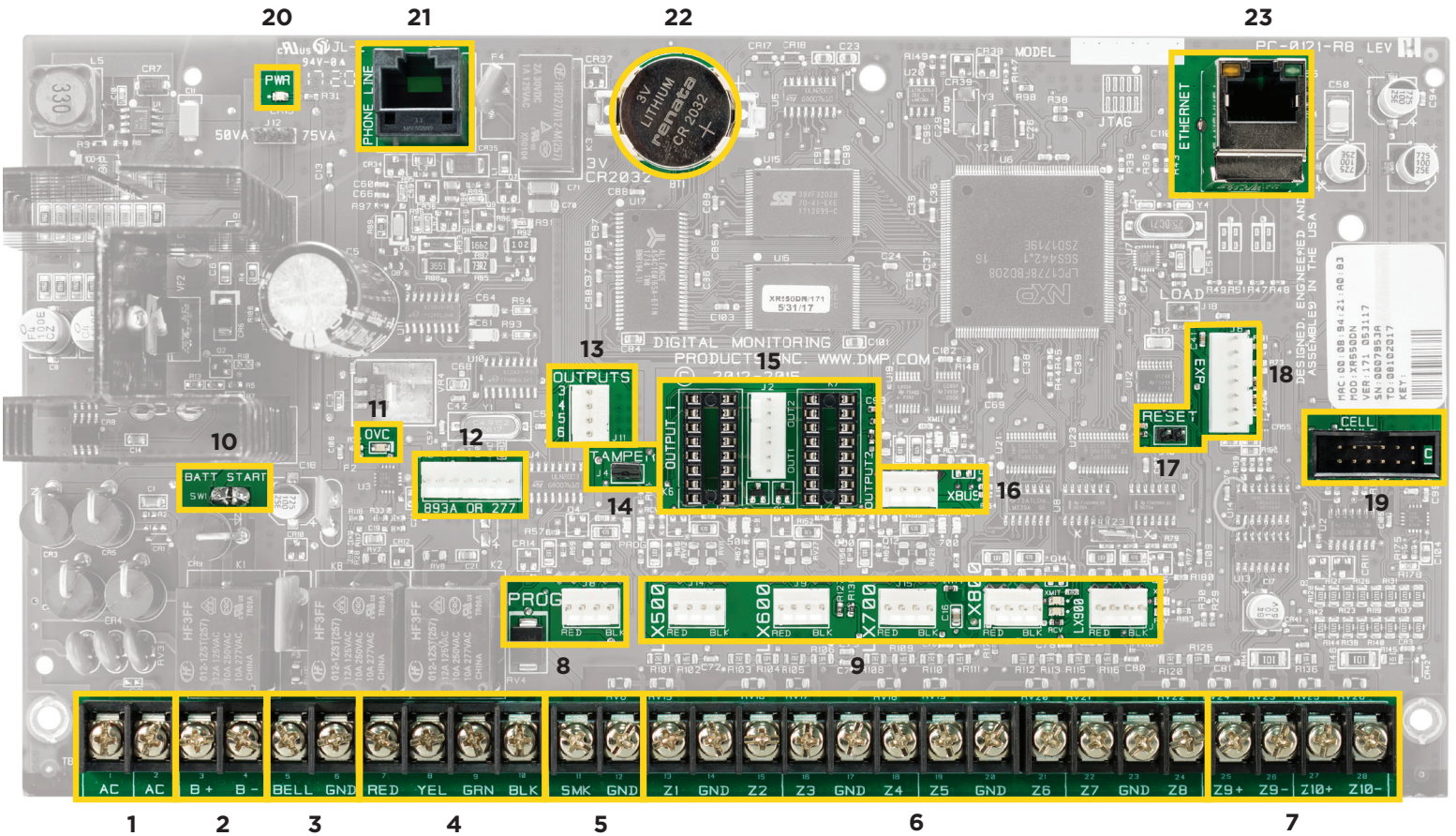


XR550 Panel Diagram Handout



- | | | |
|---|--|--|
| <p>1. _____</p> <ul style="list-style-type: none"> • 16.5 VAC • 18 - AWG Wire <p>2. _____</p> <ul style="list-style-type: none"> • Earth Ground connects to B- • 11.9 volts = low battery • 10.2 volts = battery cutoff • 12.6 volts = clears the low battery <p>3. _____</p> <ul style="list-style-type: none"> • 12 VDC Bell Output <p>4. _____</p> <ul style="list-style-type: none"> • Red - Positive 12 VDC • Yellow - Data In • Green - Data Out • Black - Ground <p>5. _____</p> <ul style="list-style-type: none"> • 12 VDC Resettable Power • SMK - Positive 12 VDC • GND - Ground <p>6. _____</p> <ul style="list-style-type: none"> • 1k - 2.2k EOL | <p>7. _____</p> <ul style="list-style-type: none"> • 3.3k EOL • 12 VDC Resettable Power <p>8. _____</p> <ul style="list-style-type: none"> • Keypad Bus Data <p>9. _____</p> <p>10. _____</p> <ul style="list-style-type: none"> • Turn on Panel with only Battery connected <p>11. _____</p> <ul style="list-style-type: none"> • Indicates overcurrent on Keypad Bus or LX Bus <p>12. _____</p> <ul style="list-style-type: none"> • 893A - Dual Phone line module • 277 - Trouble Sounder <p>13. _____</p> <ul style="list-style-type: none"> • Open Collector Outputs <p>14. _____</p> | <p>15. _____</p> <ul style="list-style-type: none"> • Form C Relays • 305 Module Relays <p>16. _____</p> <ul style="list-style-type: none"> • Wireless Receiver Connection <p>17. _____</p> <p>18. _____</p> <p>19. _____</p> <p>20. _____</p> <p>21. _____</p> <p>22. _____</p> <ul style="list-style-type: none"> • Maintains system clock <p>23. _____</p> <ul style="list-style-type: none"> • RJ 45 Ethernet |
|---|--|--|

XR550
506
OUTPUTS
.....
XR150
106
OUTPUTS

45
WIRELESS
OUTPUTS

MULTI CARD
FORMAT

8 CARD
FORMATS


XR550E
AES 128 OR 256 BIT
ENCRYPTION

25
Z-WAVE
DEVICES
PER FAVORITE


8
COMMUNICATION
PATHS

40
HOLIDAY
DATES


Tech APP
AUTOMATIC PANEL PROGRAMMING

0-425 DAY
USER CODE AUDIT

CELLULAR
LTE
TECHNOLOGY

COMMERCIAL
FIRE

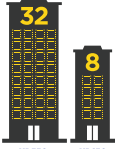
COMMERCIAL
BURG

 **99** USER
PROFILES

32 BIT PROCESSOR RUNNING
20X FASTER
THAN XR500



 **WI-FI**
 **10 | 100**
NETWORK

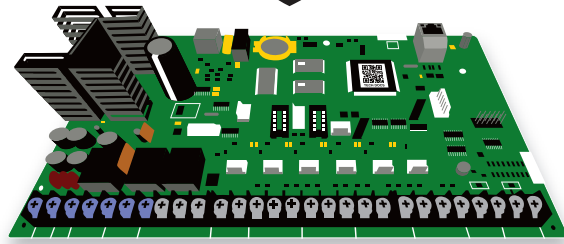
XR550DN AND XR550DE
BANK
SAFE & VAULT
PANIC TEST, DUAL AUTHORITY & PRIORITY AREA

AREAS

32 XR550
8 XR150

**MULTI
LINGUAL**
SPANISH
FRENCH
ENGLISH

**DOORS
OF ACCESS**
XR550: **96**
XR150: **8**

XR550  **16**
KEYPADS
XR150  **8**
KEYPADS



DESIGNED, ENGINEERED AND MANUFACTURED BY 


7 WIRELESS
KEYPADS

**CARD
PLUS PIN**
PER PROFILE
MEETS ICPG 705

XR550
574
ZONES

32 CHARACTER
NAMES

FOR USER, ZONE, AREA, PROFILES,
SCHEDULES, AND GROUP NAMES

CUSTOM
ACTIONS
20

**** **10,000**
USER CODES

XR150
142
ZONES

 **Virtual Keypad™**
FOR IOS AND ANDROID

 **OPTIONAL
DIALER**

 **DUAL
AUTHORITY**

 **12,000
EVENT BUFFER**

 **Virtual Keypad™**
ACCESS

 **99**
SCHEDULES

SYSTEM TYPE
 HOME  SLEEP
 AWAY  AREAS
 ALL  PERIMETER

XR550
500
WIRELESS
ZONES

COMPLIANCE  


8 SCHEDULES
PER PROFILE (OUTPUTS & ZONES)

16 SCHEDULES
PER DOOR

4 PROFILES
PER USER

XR150
100
WIRELESS
ZONES

**DMP 2-WAY
WIRELESS
COMPATIBILITY**

**TYPE OF
POWER** 
1.5 AMPS BELL | 1.5 AMPS AUX

140 Z-WAVE
DEVICES SUPPORTED
   

**ENHANCED
LOCKDOWN**

20 Z-WAVE
FAVORITES
PER SYSTEM
19354