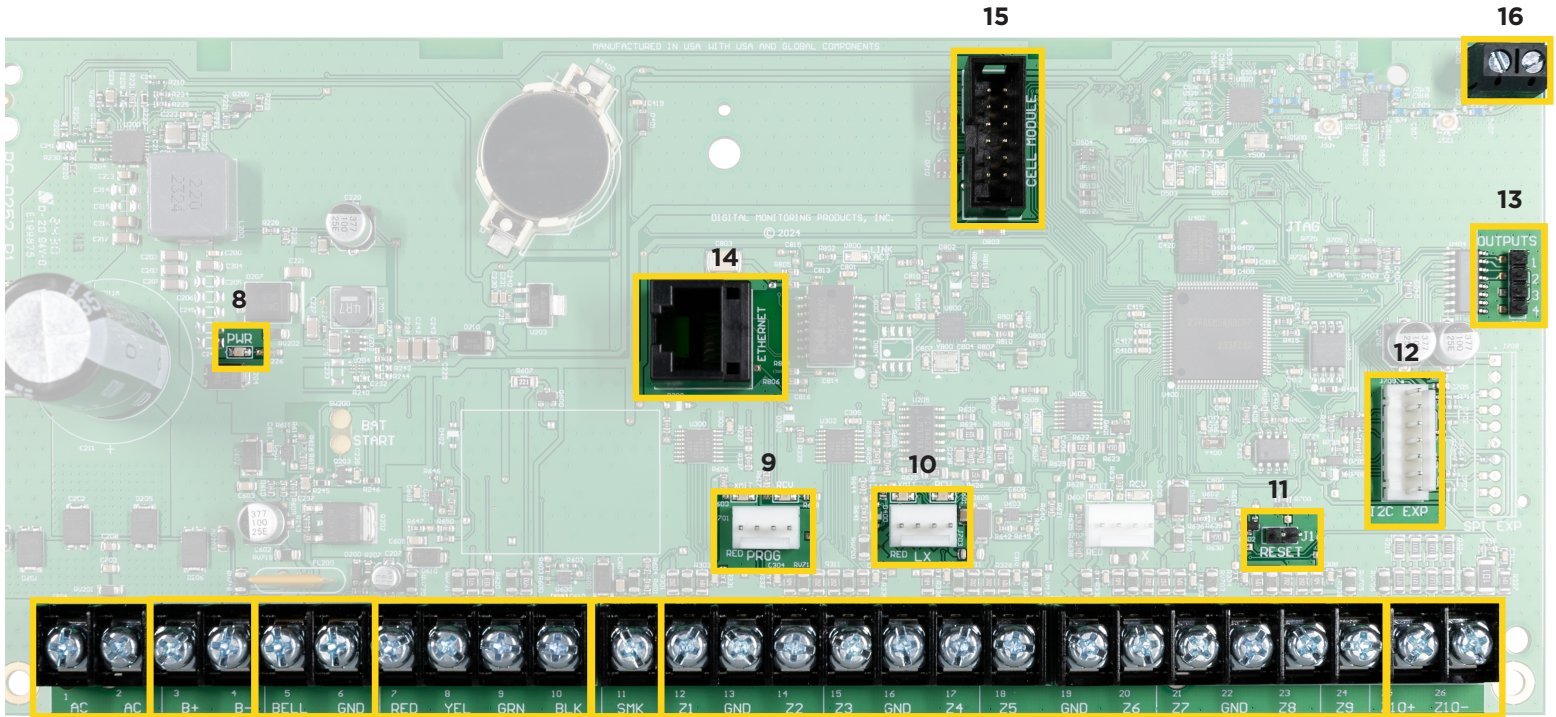


XT75 Panel Diagram Handout



- | | | |
|--|---|---|
| <p>1. _____</p> <ul style="list-style-type: none"> • 16.5 VAC • 18 - AWG Wire <p>2. _____</p> <ul style="list-style-type: none"> • Earth Ground connects to B- • 11.9 volts = low battery • 10.2 volts = battery cutoff • 12.6 volts = clears the low battery <p>3. _____</p> <ul style="list-style-type: none"> • 12 VDC Bell Output <p>4. _____</p> <ul style="list-style-type: none"> • Red - Positive 12 VDC • Yellow - Data In • Green - Data Out • Black - Ground | <p>5. _____</p> <ul style="list-style-type: none"> • 12 VDC Resettable Power • SMK - Positive 12 VDC <p>6. _____</p> <ul style="list-style-type: none"> • 1k - 2.2k EOL <p>7. _____</p> <ul style="list-style-type: none"> • 3.3k EOL • 12 VDC Resettable Power <p>8. _____</p> <p>9. _____</p> <ul style="list-style-type: none"> • Keypad Bus Data <p>10. _____</p> | <p>11. _____</p> <p>12. _____</p> <ul style="list-style-type: none"> • Open Collector Outputs <p>13. _____</p> <p>14. _____</p> <ul style="list-style-type: none"> • RJ 45 Ethernet <p>15. _____</p> <p>16. _____</p> |
|--|---|---|

Notes
