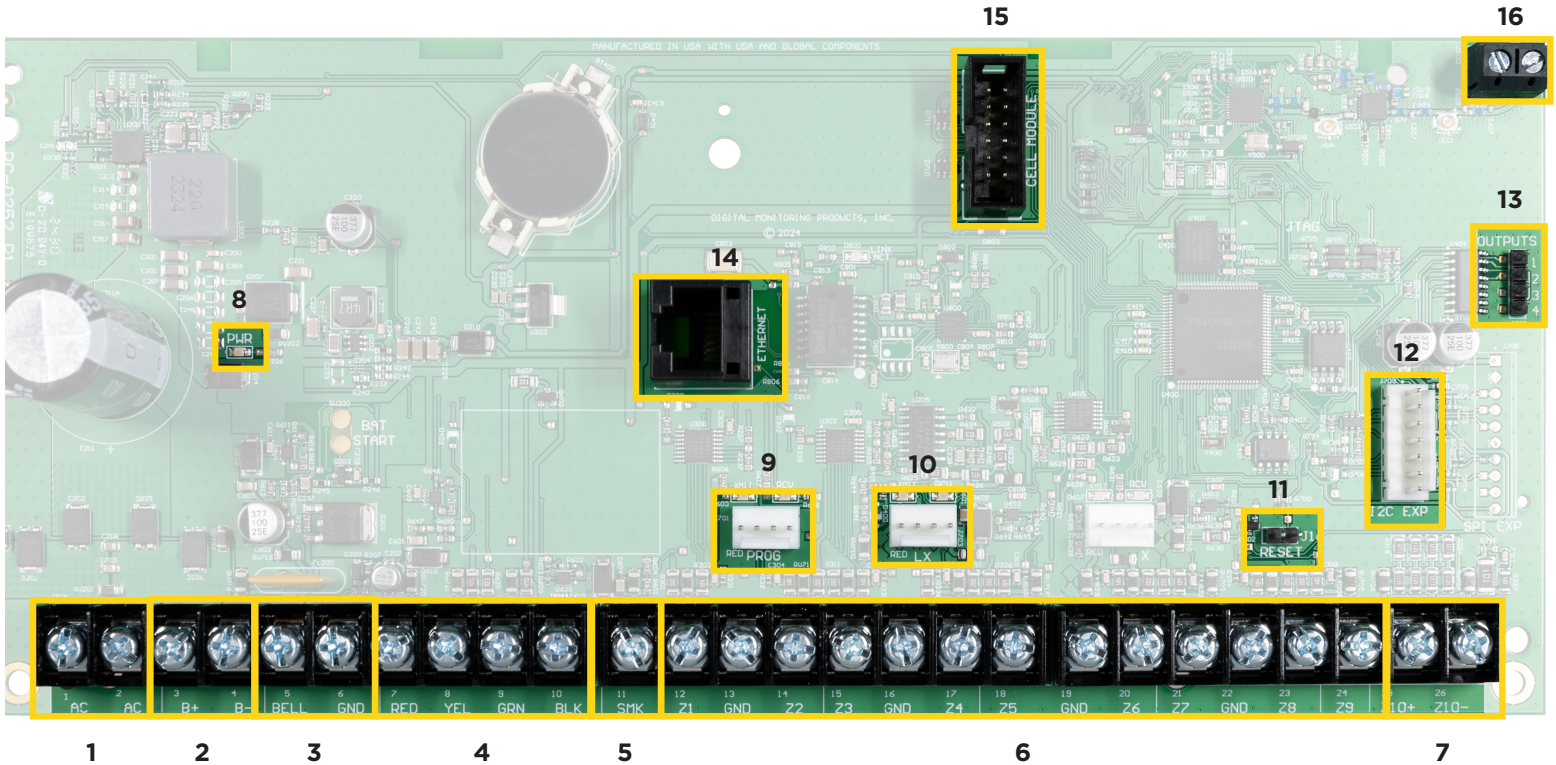


# XT75 Panel Diagram Handout



## 1. AC Power

- 16.5 VAC
- 18 - AWG Wire

## 2. Battery Terminals

- Earth Ground connects to B-
- 11.9 volts = low battery
- 10.2 volts = battery cutoff
- 12.6 volts = clears the low battery

## 3. Siren Output

- 12 VDC Bell Output

## 4. Keypad Bus

- Red - Positive 12 VDC
- Yellow - Data In
- Green - Data Out
- Black - Ground

## 5. Resettable Power

- 12 VDC Resettable Power
- SMK - Positive 12 VDC

## 6. Zones 1-9

- 1k - 2.2k EOL

## 7. Zone 10

- 3.3k EOL
- 12 VDC Resettable Power

## 8. Power LED

## 9. Programming Header

- Keypad Bus Data

## 10. LX Bus

## 11. Reset Jumper

## 12. Expansion Header

## 13. Open Collector Outputs 1-4

- Open Collector Outputs

## 14. Ethernet Connection

- RJ 45 Ethernet

## 15. Cell Card Connection

## 16. Wireless Antenna Connection

## Notes

---

---

---

---

---

---

---

---

---

---