

DMP CONTROL PANEL

Network Guide

COMMUNICATION OPTIONS TO MONITORING CENTER

DMP control panels offer three main communication methods for secure and flexible connection to the monitoring center: Network, Wi-Fi, and Cellular.

DMP panels can connect directly to local area networks (LAN) using Ethernet or Wi-Fi. This IP communication enables real-time data transmission and allows for remote access via Virtual Keypad or Dealer Admin, providing users the ability to monitor and control their systems from anywhere.

Another communication option for DMP panels is cellular communication. Using cellular allows DMP panels to connect to monitoring centers using either the AT&T or Verizon network. This wireless option ensures reliable transmission of alarm signals without relying on traditional phone lines. Cellular communication is particularly useful in areas with limited or no wired connectivity, providing a backup option in case of network outages.

Regardless of what communication option a panel uses, for a panel to communicate with the monitoring center, the IP address for a receiver must be entered into the Communication section in panel programming.

COMMUNICATION OPTIONS TO SECURECOM WIRELESS®

DMP control panels offer four main communication methods for secure and flexible connection to SecureCom Wireless®: Cellular, EASYConnect, EASYConnect + Cell Backup, and Network.

EASYCONNECT™

DMP provides a unique network connection called EASYConnect™, which permits the panel to transmit directly to the SecureCom Wireless® server using Outbound TCP Port 4001, without needing to configure port forwarding. EASYConnect™ requires a panel with network communication capability and uses the panel's serial number and app key to establish initial communication. Consult [the DMP Port Compatibility Guide \(LT-2940\)](#) to configure firewall rules, if applicable.

DMP panels with network communication capability and an installed, active cellular module can establish EASYConnect™ as the primary communication method, with a cellular backup.

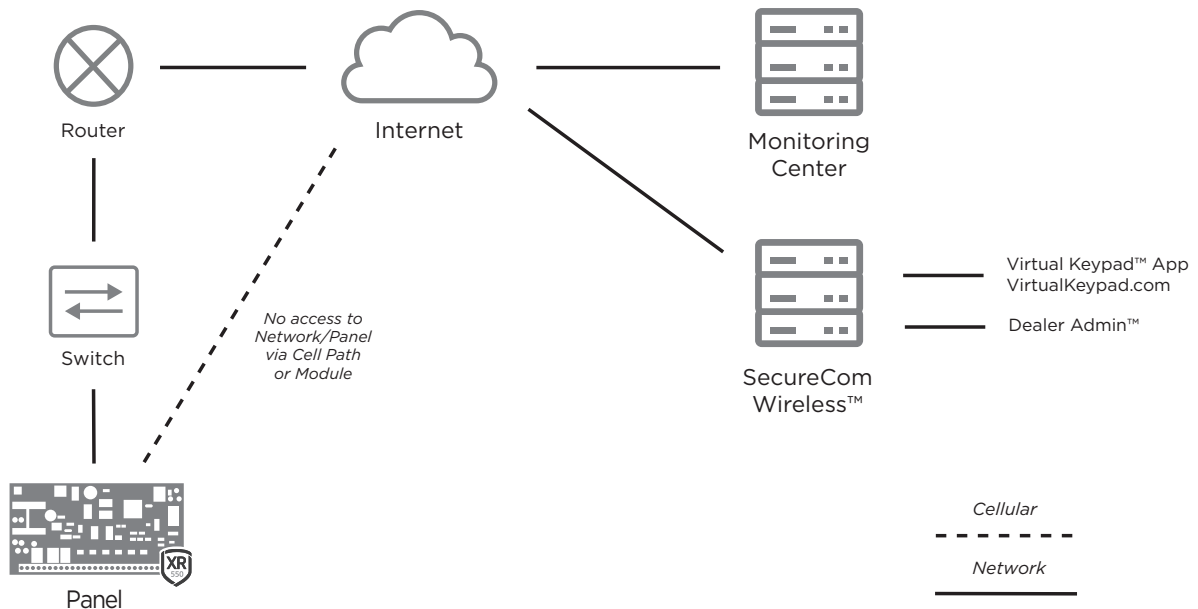


Figure 1: DMP Control Panel Network Diagram

SECURE COMMUNICATION

DMP uses encryption to secure messages sent from panels to the monitoring center and SecureCom servers. Depending on the panel programming, all alarm communication between encrypted panels and the monitoring center receiver use either 128- or 256-bit AES encryption.