

DMP XV GATEWAY WITH ALARMVISION®

Network Guide

XV GATEWAY OVERVIEW

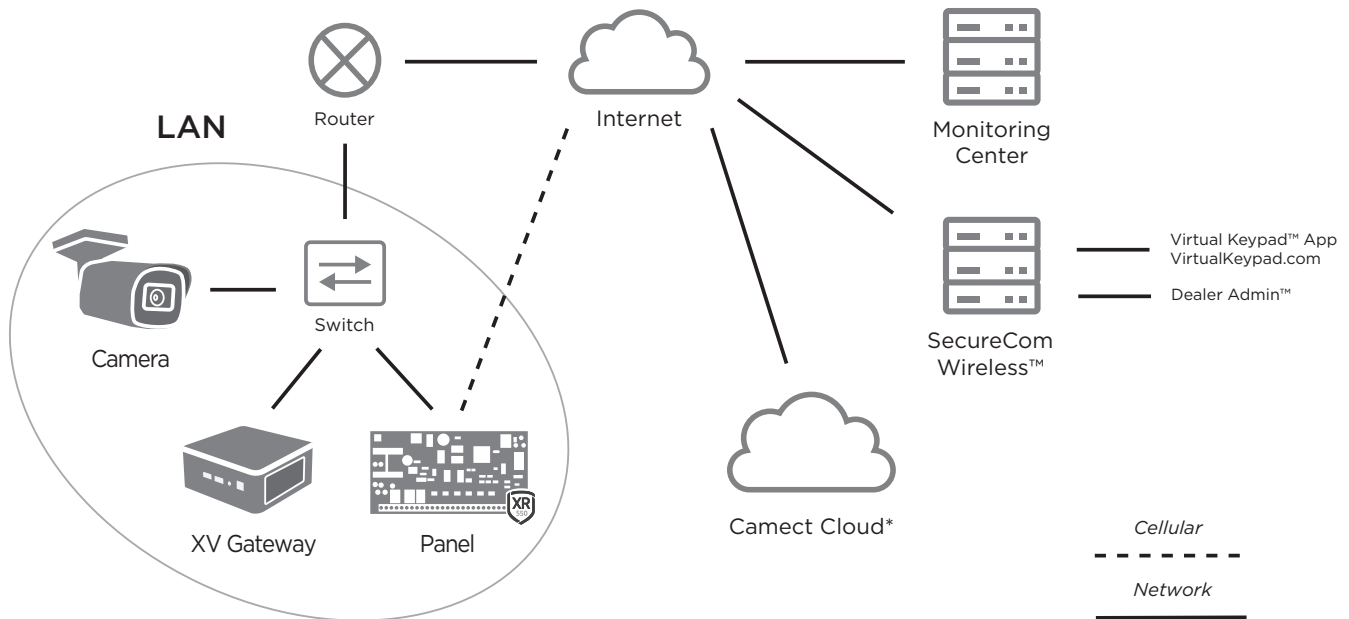
The XV Gateway with AlarmVision® seamlessly integrates cameras, analytics, and the XR Series or XT75 Control Panel to create smart motion detectors that trigger panel responses in real time based on real events for real results. Virtual Keypad users can view live and recorded HD video clips, define video actions, and receive push notifications of real events in real time for real results.

You need an active Dealer Admin account at dealer.securecomwireless.com to activate the XV Gateway.

COMMUNICATING WITH THE PANEL

The XV Gateway uses the IP of the control panel to send messages over the LAN to the control panel. From there, the control panel passes those messages to the monitoring center receiver using network or cellular communication.

The primary network connection on the XV Gateway and the panel should be connected to the same network switch or any network switch that is connected to the same subnet that the panel is connected to.



*XV Gateway Only - Panel does not connect to Camect Cloud.

Figure 1: DMP XV Gateway Single NIC Network Diagram

XV Gateway Security

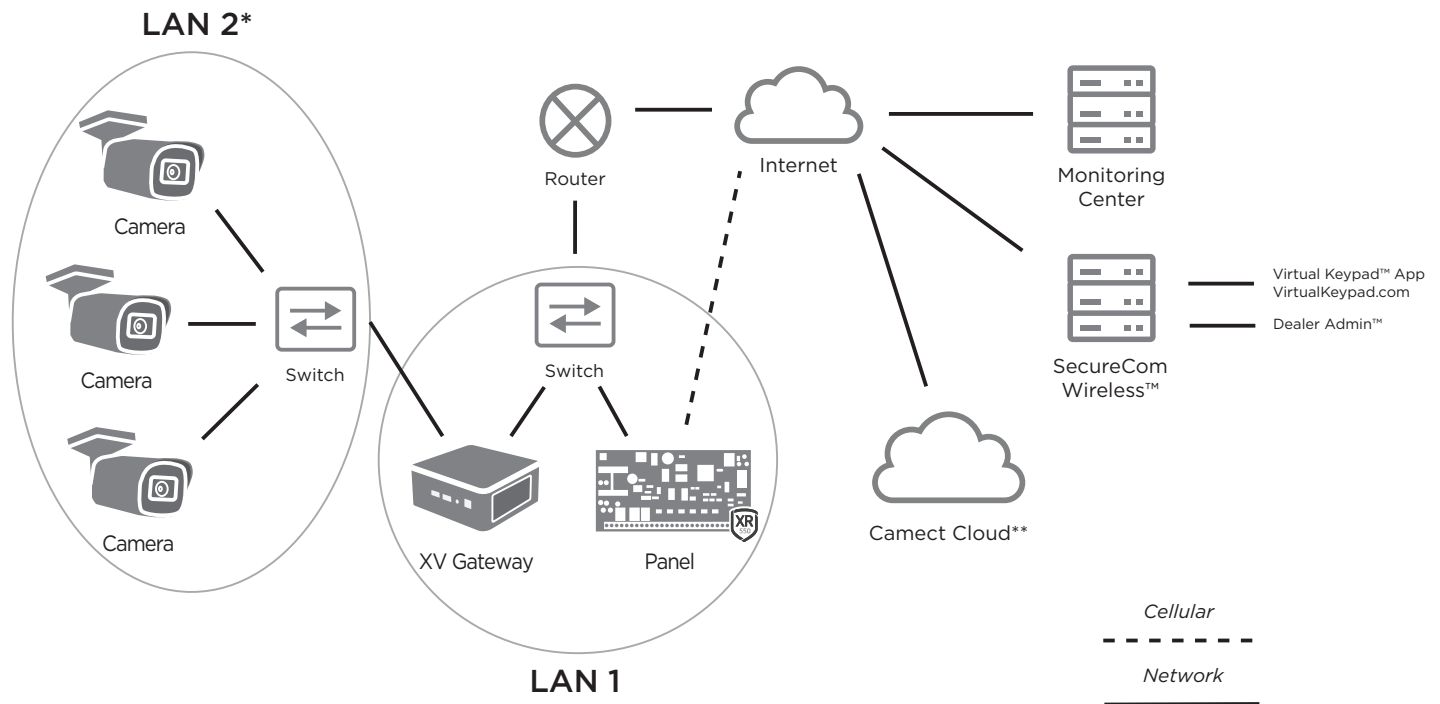
The XV Gateway offers installers the ability to isolate networks for increased network security, without compromising the ability to send messages out to the monitoring center.

The XV-60 and XV-96 also offer the ability to use Dual network interface cards (NIC), allowing the XV Gateway to have cameras on a secure LAN, and secondarily maintaining communication to the panel and SecureCom servers.

Configure Secondary NIC for Private Camera Network

There are two connection options to choose from when adding a secondary network interface to a private camera network.

- **DHCP Server:** This option will automatically assign a dynamic IP address to the XV Gateway so it can change over time. If you can plug in a camera or device into your private network and immediately access other devices on the network, then you likely have a DHCP server.
- **Static IP Address:** This refers to an IP address that is manually assigned to the XV Gateway and does not change automatically. If your private camera network consists of only cameras and you set up each camera with its own static IP address, then you likely do not have a DHCP server.



*A secondary NIC and the associated cameras require static IPs on the same subnet if there is no DHCP server.

**XV Gateway Only - Panel does not connect to Camect Cloud.

Figure 2: DMP XV Gateway Dual NIC Diagram

Additional Resources

For additional information about DMP control panel communication options, refer to the DMP Control Panel Network Guide ([LT-2947](#)). For additional information about the XV Gateway, visit the XV Gateway with Alarmvision® Help File at [xvgateway.dmp.support](#).